

Remote Desktop Software

Remote Desktop Software allows you to log in and take over control of a remote machine as if you were sitting in front of it. Since you are controlling the machine remotely it is important to remember the following:

- Only one person can control a machine at a time
- There has to be a machine to remote in to
- Anything on that machine can be accessed

There are several Remote Desktop Software products available. GoToMyPC and LogMeIn are probably the 2 most popular options. We have experience with LogMeIn and so this is the tool that we recommend for the following reasons:

- It is free
- It allows you to connect to a Mac or a PC
- Simple to configure

This document will describe how to set up LogMeIn on a computer to allow it to be accessed remotely. The screenshots will be taken from a Mac but rest assured the screens are similar when run from a PC.

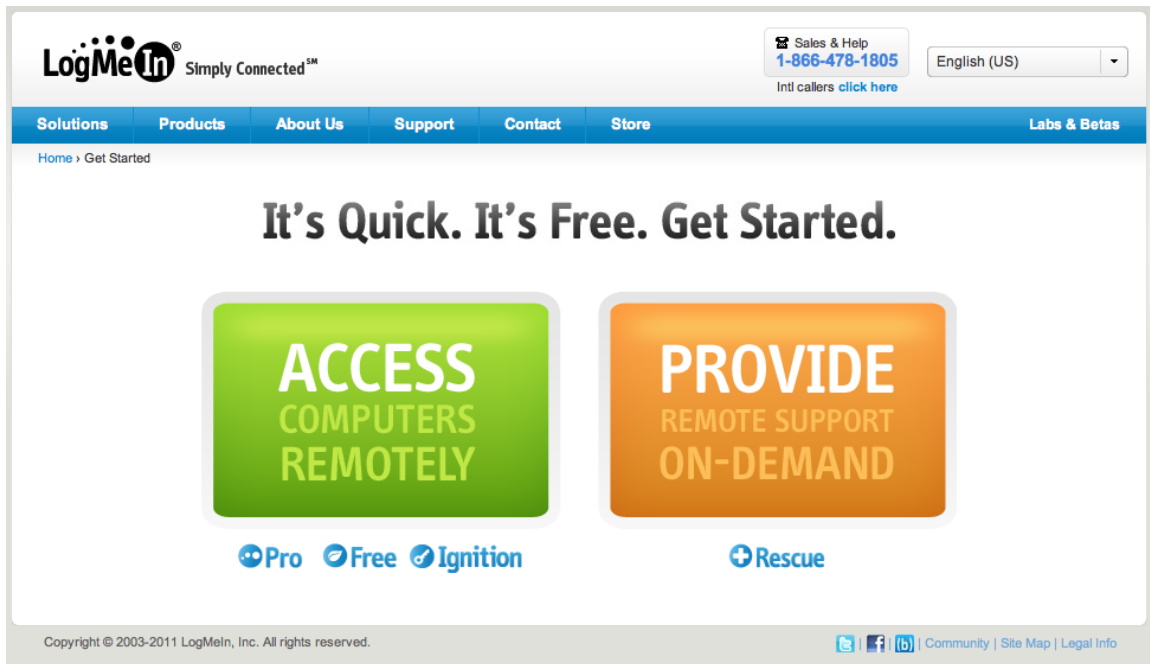
Setup

The screenshot shows the LogMeIn website homepage. At the top left is the LogMeIn logo with the tagline "Simply Connected™". To the right of the logo is a "Sales & Help" button with the phone number "1-866-478-1805" and a link for "Intl callers click here". Further right is a language dropdown menu set to "English (US)". Below the logo is a navigation bar with links for "Solutions", "Products", "About Us", "Support", "Contact", "Store", and "Labs & Betas". The main content area features a large blue banner with the text "TIP: TRANSFER FILES USING FILE MANAGER." and a sub-headline "Transfer files between computers easily by selecting files and dragging them to the appropriate folder." Below this is a "LogMeIn Pro" logo and a "See How" button. To the right of the banner is a "Login" section with input fields for "Email" and "Password", a "Log Me In" button, and links for "Create an account", "Forgot your password?", and "Log In to Rescue account". Below the banner are three feature tiles: 1) "Access computers and save files to your iPad or iPhone. Check it out" with an iPad icon. 2) "Complete remote access for Windows and Mac. Go Pro" with a computer monitor icon. 3) "See what your customers see with web based support. Try it free" with two computer monitor icons. At the bottom of the page, there is a copyright notice "Copyright © 2003-2011 LogMeIn, Inc. All rights reserved." and social media links for Twitter, Facebook, and LinkedIn, along with links for "Community", "Site Map", and "Legal Info".

Go to the machine where you want to “remote” in to. Open a browser and go to <http://www.logmein.com>

If you don’t have an account set up with LogMeIn, click on the Create an Account link. If you have an account set up log in using those credentials.

If you opt to create a new account you will get the screen below and you should click on the “Access Computers Remotely” option.



Create an account by entering in your email address and a password. After everything is set up you will want to check your email and confirm your account to activate it.

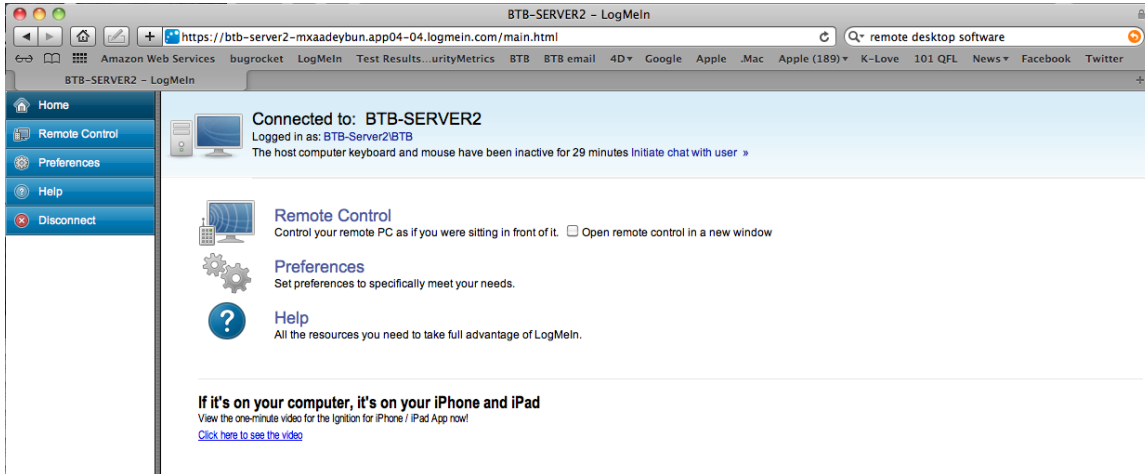
Once you have your account set up you should click on Add Computer to add this computer to your list. It will download some software that needs to be installed. The installer automatically takes care of setting it up so that each time your machine is started it will automatically start LogMeIn.

A word about security. If you have your machine set up to require a username and password to be entered before you can log into the machine, LogMeIn will also require you to supply those credentials in order to remotely control the machine. If you don’t then it will require you to enter a passphrase that will need to be supplied when you try to access the machine remotely.

Access

Now that you have LogMeIn installed on the computer you want to remote in to you can access that machine from anywhere you have an internet connection and a browser. Open

a browser and go to <http://www.logmein.com>. Enter your email and password to log into your account. From your list of computers you can select the one you want to control remotely. Enter in the security credentials to log onto the machine. Once you are logged in you will see a screen where you will want to click on Remote Control to gain access to the machine.



Once the connection is made, you will see the desktop of the remote machine. You can open the window in Full Screen mode.

A word about LogMeIn Free vs Pro. In most circumstances LogMeIn's free version will work just fine for most needs. If you want to send a print job from the remote computer to your local printer or transfer files from one machine to another you might want to consider the Pro version.